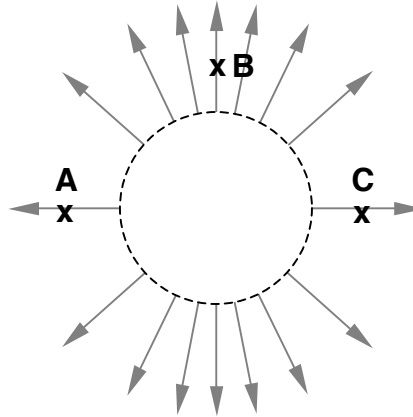


The figure below shows the **electric field lines** in the region of space surrounding the dashed circle. The electric field represented by these lines is caused by the “mystery” charged object or objects that are hidden under the circle.



- (3) Compare the magnitude of the electric field at the points **A**, **B**, and **C** marked on the figure. Indicate which points have the smallest and largest fields, and if the field strength at any two (or three) of the points is the same. Provide a brief but *clear* explanation of your reasoning. [4]
- (4) What sort of charged object or objects under the circle could have **produced** these field lines? Sketch and describe the object(s) you think might be responsible. [5]