



Mural Project

Siebel Center for Design

Celebrating Multidisciplinary Innovation at Illinois

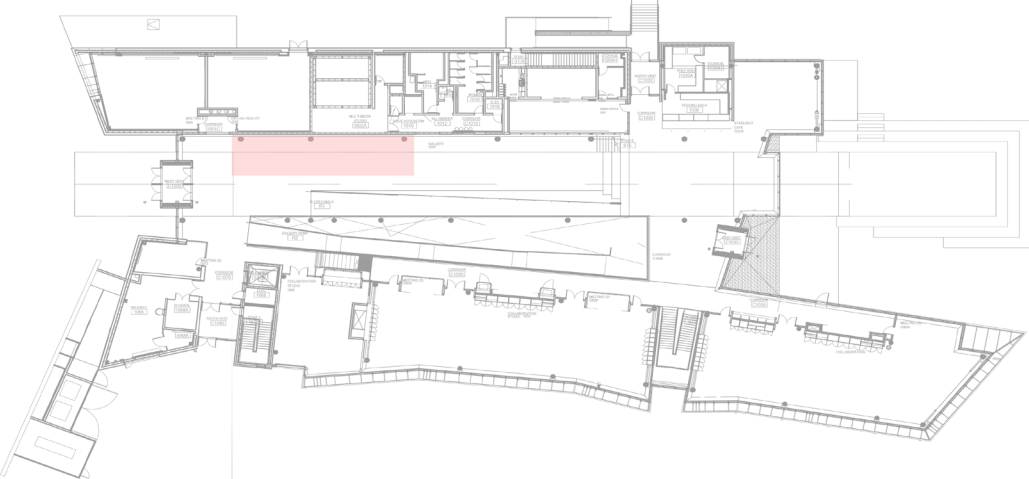
Initial Concept & Sketches—November 2020



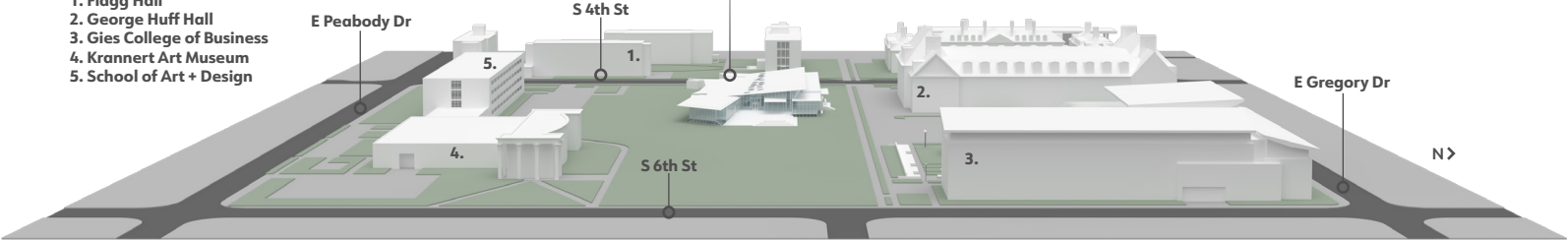
Siebel Center for Design

Mission

The mission of the Siebel Center for Design is to foster multidisciplinary collaborations across campus, using design thinking as an approach to promote human-centered design and mandated quick iterations.



- 1. Flagg Hall
- 2. George Huff Hall
- 3. Gies College of Business
- 4. Krannert Art Museum
- 5. School of Art + Design



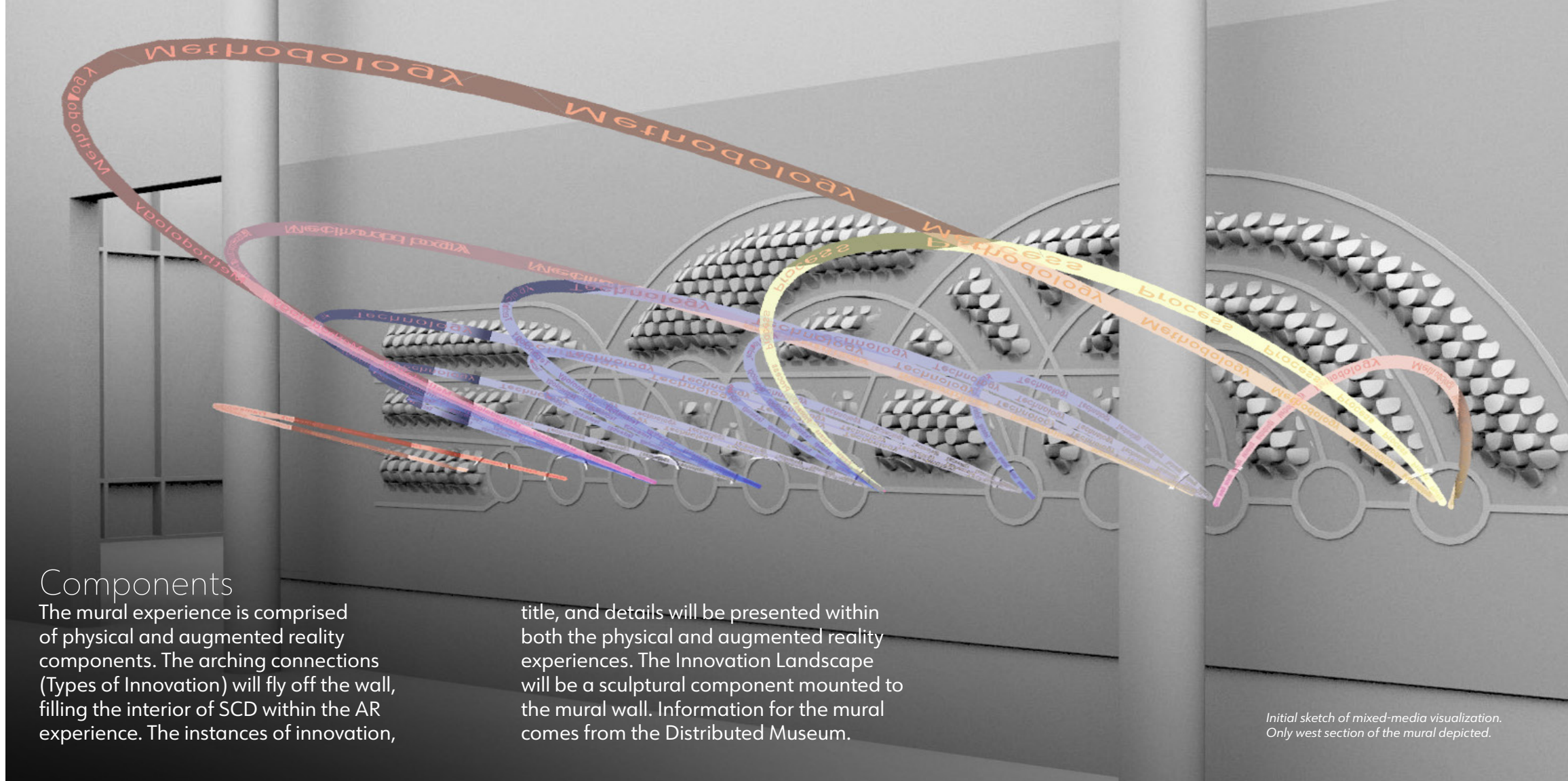
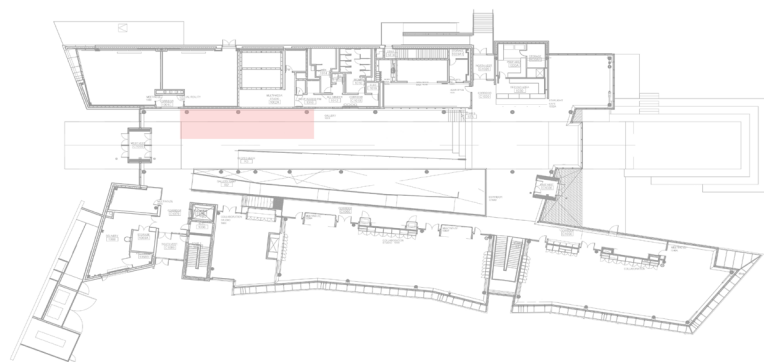
Mural

Purpose

The mural celebrates the multidisciplinary contributions to the arts, sciences and society developed at the University of Illinois that elevate the human spirit, inspire better lives, strengthen the passion for knowledge, and care for the peoples of our world.

Space

The mural will occupy a 60-foot wide by 10-foot tall section of wall near the center of the main floor in the Siebel Center for Design.



Components

The mural experience is comprised of physical and augmented reality components. The arching connections (Types of Innovation) will fly off the wall, filling the interior of SCD within the AR experience. The instances of innovation,

title, and details will be presented within both the physical and augmented reality experiences. The Innovation Landscape will be a sculptural component mounted to the mural wall. Information for the mural comes from the Distributed Museum.

*Initial sketch of mixed-media visualization.
Only west section of the mural depicted.*

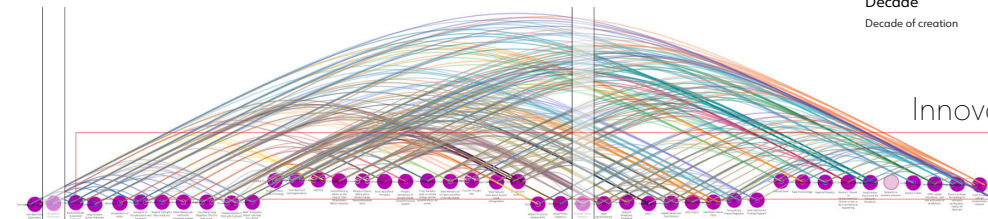
Narratives

Connections

Four innovation types create wide connections through space and time. These connections tell the rich story of accomplishment, collaboration, and discovery at UIUC. The unique node connections illustrate the multi-disciplinary contributions of faculty, staff, and students in a given instance. The nodes also illustrate the decade of creation, the number of involved colleges, and the collaborating departments involved in the creation of a particular instance of innovation.

Themes

Instances of innovation are clustered together according to the thematic elements their stories tell.



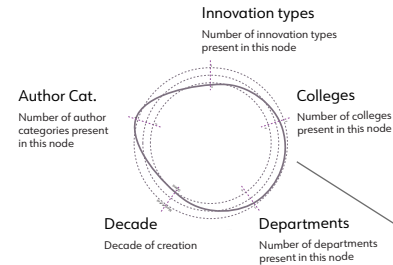
Building a Safer World Changing Climate = Changing Lives Looking to the Sky Solving Problems Around the World

Types of Innovation

-  Knowledge Framework
-  Process
-  Methodology
-  Technology

Innovation Landscape

Instance of Innovation



Innovation Details

Tracking Sputnik I's Orbit

George Swenson obtained the contract information for members of the Illinois Astronomical Society to track Sputnik I's orbit on October 4, 1957. On the right in question, the information was able to get measurements of Sputnik and were able to use Doppler Radio data. Members of the department used the data from the Doppler and information to study its orbit. This data helped advance satellite-based astronomical research and was helpful with grants from the National Research Council, NASA, and the Air Force.

Research on synthetic polymers

Carl shipg Marval worked as a chemist for many years, focusing on the creation of synthetic polymers. He received his PhD in chemistry in 1920 under William Hoge (the roommate of the Hoge Laboratory). Those synthetic polymers were used by astronauts and treated due to its resistance to temperatures up to 1100 degrees Fahrenheit. The polybenzimidazole he created were the first monomer fibers produced commercially in the 1980s. Beyond his work with synthetic polymers, he was an instrumental figure in the creation of chemistry built at the University of Illinois and nationally.

The Team

SIEBEL CENTER FOR DESIGN DIRECTOR
Rachel Switzky

ART DIRECTOR & PROJECT LEAD
Juan Salamanca
Ph.D. Assistant Professor, School of Art & Design

INNOVATION DATABASE
Kristen Allen
Coordinator, Illinois Distributed Museum
Ani Karagianis
Grad Student, Library and Information Sciences

VISUALIZATION LAYOUT
Juan Salamanca
Faithful Oladeji
Architecture, MFA Graphic Design
Michael Dalton
Undergrad Student, Graphic Design

INNOVATION LANDSCAPE
Aaron Brakke
Assistant Professor, School of Architecture
Yoonah Noh
Architecture, Volunteer
Exhibit manufacturing and installation

AUGMENTED REALITY
Daniela Delgado
Doctoral Student, Informatics
Faithful Oladeji
Michael Dalton
Augmented Reality Developer

COMMUNICATIONS AND PR
Juan Salamanca
Kristen Allen

DOCUMENTATION
Michael Dalton

OPENING COMMITTEE
Rachel Switzky
Director of Siebel Center for Design
Plus a body of faculty on campus

SCD COORDINATION
Nicholas Puddicombe
Associate Director of Operations and Experience
Emily Kasak
Office Manager

Italics - to be recruited

Multidisciplinary Collaboration Mural
Estimated opening mid-April 2021

