



Welcome To International Campus Zhejiang University

Guide for International Students

GETTING STARTED AT INTERNATIONAL CAMPUS

International College
Office of Student Affairs

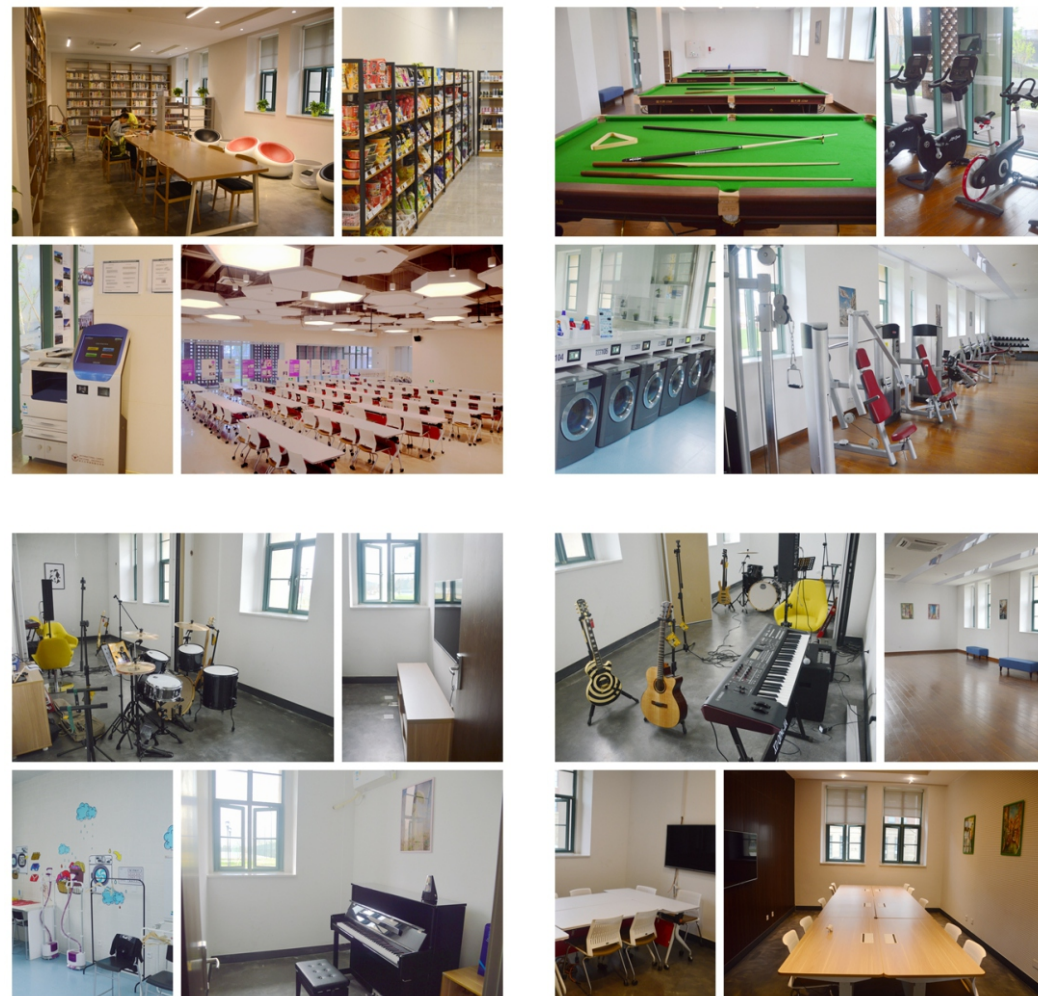


• All Residential Colleges provide: Stuff in room for personal usage

- Bedside lamp
- Closet
- Room AC/heater
- Room trash bin
- Personal pillow/sheets/comforter are provided at an additional cost (297.5 RMB)
- Room cork board

• Stuff in public area shared with others

- | | |
|----------------|------------------------|
| • Hair dryer | • Fridges |
| • Microwave | • TV sets |
| • Coffeemakers | • Water coolers |
| • Toasters | • Umbrellas (for rent) |
| • Drying rack | |

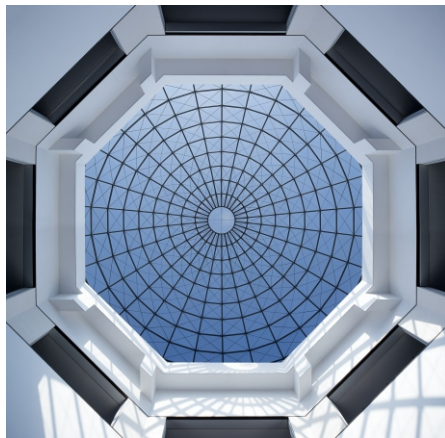


• Student ID Card

During registration you will set up your Student ID that conveniently serves as your official identity and e-wallet in the university. It contains a microchip that runs a variety of applications and allows you to:

1. Enter your hall of residence;
2. Open the door of your dorm;
3. Make payments at cafeterias, canteens, and affiliated shops on all ZJU campuses;
4. Borrow books from all ZJU libraries;
5. Use the printing system in the International Campus.

You can get your Student ID card with your passport at the Campus Service Center (CSC). The initial password for your Student ID card is the last six digits (letters excluded) of your Passport number. In case you lose your Student ID card, you can go to CSC to make a new one for a fee of 20RMB.



STUDENT ID CARD





SIM Card

There will be several telecommunication companies such as China Mobile, China Unicom and China Telecom providing SIM card services on campus during the first few days. You can compare and choose the services that best fit your needs.



Net ID and Email Account

You will have a Net ID and an email account created for you after your acceptance into ZJU. Your email address will be your student ID No.@zju.edu.cn and your initial password will be the last six digits (letters excluded) of your passport number. The password of your email account and Net ID are always the same.

Service Hotline of ZJU IT: 0571-87572669 (7x24hrs) . Information Service of ZJU IT: <http://its.intl.zju.edu.cn>.



Bank Card

The International College will open a Bank of China account for every student who will receive either the ZJU or Chinese government scholarship. Self-funded students are strongly suggested to apply for a bank account in Haining. There are ATMs from Bank of China, Agricultural Bank of China, China Construction Bank on campus where you can deposit and withdraw money.

• Packing List

Most of the supplies below can also be bought in China. However, in Haining, some students have found difficulty in purchasing appropriate-sized clothes and shoes, familiar medicine, and ingredients for cooking international food.

Below are supplies you may need during your stay:

- The following documents:
 - Passport + Visa, and their copies
 - Credit card + emergency card kept in separate places
 - Details for telephone/internet banking for your personal bank
- Unlocked mobile phone
- Enough RMB in cash*
- Adaptor for electrical appliances (Chinese outlets are usually Type A, Type I, and Type C&F, 220V)
- Laptop (there is no computer lab on campus)
- Toiletries
- Bath towel(s)
- Shower shoes
- Shower caddy
- Personal medicine and basic first aid kit (diarrhea medicine, sunscreen, aftersun, paracetamol, etc.)

- Camera
- Useful Apps: VPN, WeChat, Pleco, map app (Amap or Baidu), train app (12306 or Qunar), translator (Baidu, Bing or Google), etc.
- Personal items that will help you feel at home

- Home food and spices
- Extra clothing hangers
- Laundry basket
- Plates/bowls/mugs/utensils
- School supplies
- Sewing kit
- Formal clothes (suit/dress)
- Swim suit
- 10 face-shot pictures 1 inch by 1 inch

Scholarship will not be available immediately on your arrival so you are suggested to bring around 5000 RMB via cash or ATM. Last year, the scholarship was available in late October. So please bring enough cash, just in case. Also need to add the different fees that will be charged e.g. physical checkup, deposit



TRANSPORTATION

The International Campus of Zhejiang University is located at 718 East Haizhou Road, Haining, Zhejiang Province (浙江省嘉兴市海宁市海州东路718号).

NOTE: Please notice that gate on East Haizhou Road(海州东路) is not open temporarily, students can get in through the entrance on East Shuiyueting Road(水月亭东路).

There are several ways to arrive/depart from Haining City below you can find the most convenient travel routes from the two larger nearby cities Shanghai and Hangzhou.

Hangzhou ↔ Haining

By rail:

Both Hangzhou Railway Station (Hángzhōu huǒchē zhàn 杭州火车站) and Hangzhou East Railway Station (Hángzhōu huǒchē dōng zhàn 杭州火车东站) have normal trains that go to Haining Railway Station (海宁站). Travel time is around 1 hour from both stations in Hangzhou.

NOTE: Please pay attention that your destination is Haining Railway Station (海宁站) , not Haining West Railway Station (海宁西站) .



Haining Railway Station to the International Campus

From Haining Railway Station you can take the city bus No. 33 and get off at the stop "Zhejiang daxue guoji xiaoqu" (浙江大学国际校区站). The bus will stop right at the North Gate of the Campus. An alternative is taking a taxi, which will cost you around 30-40RMB.

By air:

From Hangzhou Xiaoshan International Airport (杭州萧山国际机场) there are shuttle-buses that go to Haining Bus Station (海宁客运中心). From Haining Bus Station you can take city bus No. 29 and get off at the stop "Zhejiang daxue guoji xiaoqu" (浙江大学国际校区站).

Another option is to take the shuttle-bus to Hangzhou East Railway Station (杭州东站) ; from there you can either transfer to Hangzhou Railway Station (杭州站) by metro line 1 or depart directly from Hangzhou East Railway Station to Haining Railway Station (海宁站) depending on available tickets. Taking taxi to either of the Railway Station in Hangzhou will cost around 120-150RMB.

It is also possible to take a taxi from the Hangzhou Xiaoshan International Airport (杭州萧山国际机场) directly to the International Campus in Haining. The taxi fare will cost you up to 300-400RMB

Shanghai ↔ Haining

By rail:

Shanghai South Railway Station (上海南站) is the only train station in Shanghai where you can take a train directly to Haining Railway Station (海宁站). which will cost you around 20RMB. The travel time takes 1 hour and a half. You can reach Shanghai South Railway Station by metro line 1 or 3.

Another option is to depart from Shanghai Hongqiao Railway Station (上海虹桥站) on metro line 2 to Tongxiang Railway Station (桐乡站). Train fare 30-50RMB depending on if it is a high-speed train or bullet train. Travel time takes 40 minutes. From Tongxiang Railway Station you can take the taxi to the International Campus, which will cost you around 60RMB, circa 30 minutes drive. It is recommended that you take the Haining taxi (green car) instead of the Tongxiang taxi (yellow car); Tongxiang taxi drivers might not be too familiar with Haining and will possibly also charge an additional fee.

From Haining Railway Station you can take the city bus No. 33 and get off at the stop "Zhejiang daxue guoji xiaoqu" (浙江大学国际校区站). The bus will stop right at the North Gate of the Campus. An alternative is taking a taxi, which will cost you around 30-40RMB.

By air:

From Shanghai Pudong International Airport (上海浦东国际机场) you will have to travel to either to Shanghai South Railway Station or Shanghai Hongqiao Railway Station (follow the instructions provided above). From Pudong Airport to either of these two railway stations expect travel time to be around 2 hours.

Train tickets:

Upon your arrival and during your travel in China you will more than often travel by train. We, therefore, recommend that you use the train ticket-booking site (www.12306.cn/), to both book your train tickets and follow the train schedule. NOTE: foreigners still need to queue in the line to take the tickets.

Please provide your transportation information by sending email to student_affairs@zju.edu.cn. We will contact you to arrange the pick-up service that is available on September 11th to 12th.



G SAFETY NOTES

The International Campus is committed to the safety and security of our students. Here are some tips, reminders and guidelines to promote student safety and awareness.

• General notes

- Do not drink the tap water.
- Avoid public demonstrations.
- Beware of tea invitations from strangers.
- Be careful of your belonging in crowded areas.
- Carry toilet paper and hand sanitizer on you.
- Carry your passport to book hotels or trains.
- Be mindful of security checks at trains/subways and avoid carrying pocket knives and other forbidden items.
- Pay attention to weather forecasts when traveling (flooding and storms).
- Be mindful of vehicles on the road and sidewalk.
- Do not rent illegal private cars or take unlicensed taxis.



- **Food Safety**

The cafeterias on International Campus meet the requirements for health inspections and provide a great variety of dishes. In addition, Residential College has kitchen where students can cook by self. However, when you go outside Campus to eat, there are some precautions:

Street food: it's a great treat to either sit at a small table with friends or roam an area with delicious food when you travel around China. Popular food vendors with long queues can be regarded as serving fresh foods. You do not always know the circumstances of the preparation of your food, but please avoid places that are completely un-sanitized and unclean, not cooked well, is not fresh, dishes that include anything raw, or if you suspect that the food have been washed in contaminated water

- **Drinking Water**

No matter where you are in China you should not drink tap water without boiling it first. This is mostly not an issue since bottled water can be found almost everywhere.

- **Traffic Safety**

Traffic rules and regulations might be very different from what you are used to but like all other places be observant when in the traffic. Pay extra attention when crossing the road and be careful to give way to motor vehicles.



Please call 110 in the event of an emergency.

Campus Police Office: Room 119, Gym